

Central Carolina Hospital 115th Anniversary

*Making Communities Healthier
Since 1909*



LIFEPOINT
HEALTH

The hospital first opened its doors under the name Central Carolina Hospital in....

- A. 1909
- B. 1931
- C. 1953
- D. 1981

The hospital first opened its doors under the name Central Carolina Hospital in....

- **A. 1909**
- B.
- C.
- D.

Central Carolina Hospital THEN and NOW



Central Carolina Hospital THEN and NOW



Central Carolina Hospital, 1910

Prior to the first section of Lee County Hospital in 1931, Lee County had how many hospitals?

- A. None
- B. 1
- C. 2
- D. 3

Prior to the first section of Lee County Hospital in 1931, Lee County had how many hospitals?

- A.
- B.
- **C. 2**
- D.

A Tale of Two Lee County hospitals

- **A. Central Carolina Hospital - corner of Maple and Fourth Street (~1909)**
 - ~20 rooms, run by Drs. W.A. and J.P. Monroe
- **B. The Scott Hospital - 105 Gordon St., corner of Moore and Gordon Streets (1924)**
 - 14 beds, operated by Dr. Charles L. Scott, son of Major John Winslow Scott Sr.

CCH first opened its doors under the name Lee County Hospital in....

- A. 1909
- B. 1931
- C. 1953
- D. 1962

CCH first opened its doors under the name Lee County Hospital in....

- A.
- **B. 1931**
- C.
- D.

Consolidation into Lee County Hospital

- The three doctors (Drs. Monroe and Dr. Scott) agreed if the county would build a new hospital, they would close their respective hospitals once the first section of a new Lee County Hospital was built
- Lee County taxpayers approved bond issue to build a new hospital in 1930
- The county-owned Lee County Hospital opened in 1931 on Hillcrest Drive

What was the total cost of building the first section of Lee County Hospital in 1930-31?

- A. \$87,900
- B. \$105,000
- C. \$230,000
- D. \$345,000

What was the total cost of building the first section of Lee County Hospital in 1930-31?

- **A. \$87,900**
- B.
- C.
- D.



Costs and Funding Sources for 1930-31 Lee County Hospital

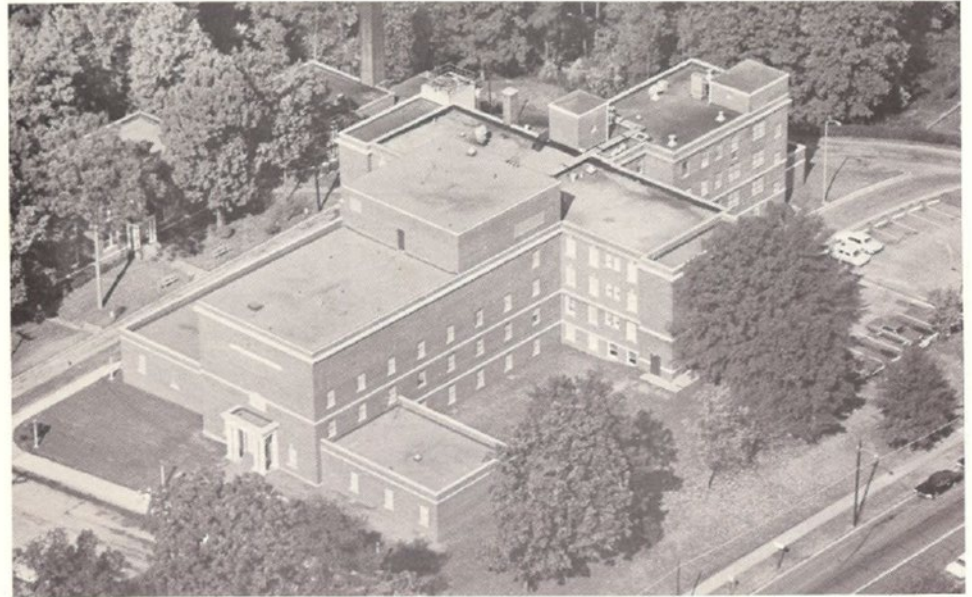
- Lee County bond issue: \$62,500
- Duke Endowment: \$37,500
- Land cost: \$7,000

Central Carolina Hospital had additional major expansions in....

- A. 1952-53
- B. 1961-62
- C. 1980-81
- D. All of the Above

Central Carolina Hospital had additional major expansions in....

- A.
- B.
- C.
- **D. All of the Above**

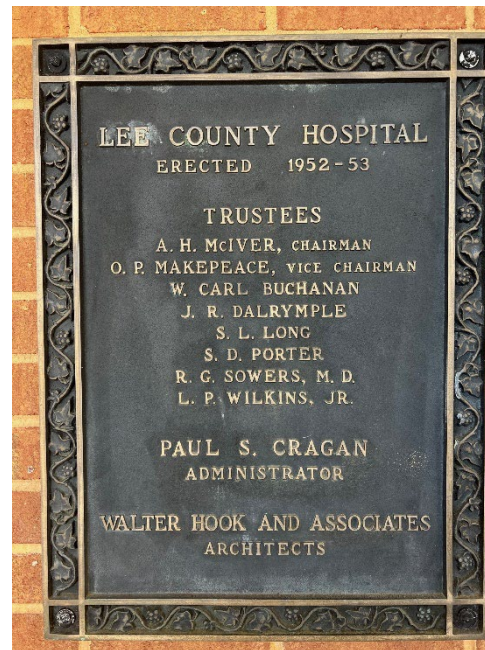
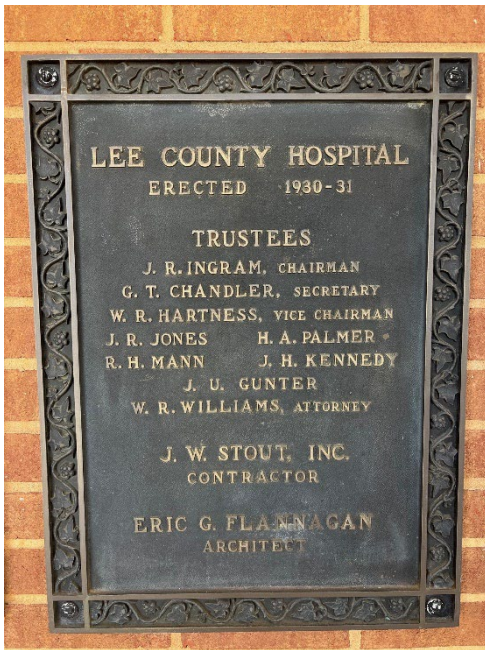


LEE COUNTY HOSPITAL
SANFORD, N. C.

Central Carolina Hospital Expansions

- **1930-31:** First section of Lee County Hospital
- **1952-53:** New east wing of hospital
- **1961-62:** New west wing of hospital
- **1981:** New hospital on Carthage Street

Major Expansion Dates



What was the total cost of building the East Wing of Lee County Hospital in 1952-53?

- A. \$230,000
- B. \$300,000
- C. \$350,000
- D. \$400,000

What was the total cost of building the East Wing of Lee County Hospital in 1952-53?

- A.
- B.
- **C. \$350,000**
- D.

Funding Sources for the East Wing expansion of Lee County Hospital

- Lee County bond issue: \$200,000
- Hill Burton Act funding: \$150,000
- **Total: \$350,000**

What was the total cost of building the West Wing of Lee County Hospital in 1961-62?

- A. \$600,000
- B. \$780,000
- C. \$890,000
- D. \$1.3 million

What was the total cost of building the West Wing of Lee County Hospital in 1961-62?

- A.
- B.
- C.
- **D. \$1.3 million**

Funding Sources for the West Wing expansion in 1961-62

- Lee County bond issue: \$600,000
- Federal Hill Burton Act funding: \$720,000
- **Total: \$1.32 million**

Central Carolina Hospital has been at its current location since....

- A. 1963
- B. 1971
- C. 1981
- D. 1994

Central Carolina Hospital has been at its current location since....

- A.
- B.
- **C. 1981**
- D.



The new Central Carolina Hospital in 1981 cost....

- A. \$11.2 million
- B. \$15.8 million
- C. \$17.5 million
- D. \$19.6 million

The new Central Carolina Hospital in 1981 cost....

- **A. \$11.2 million**
- B.
- C.
- D.

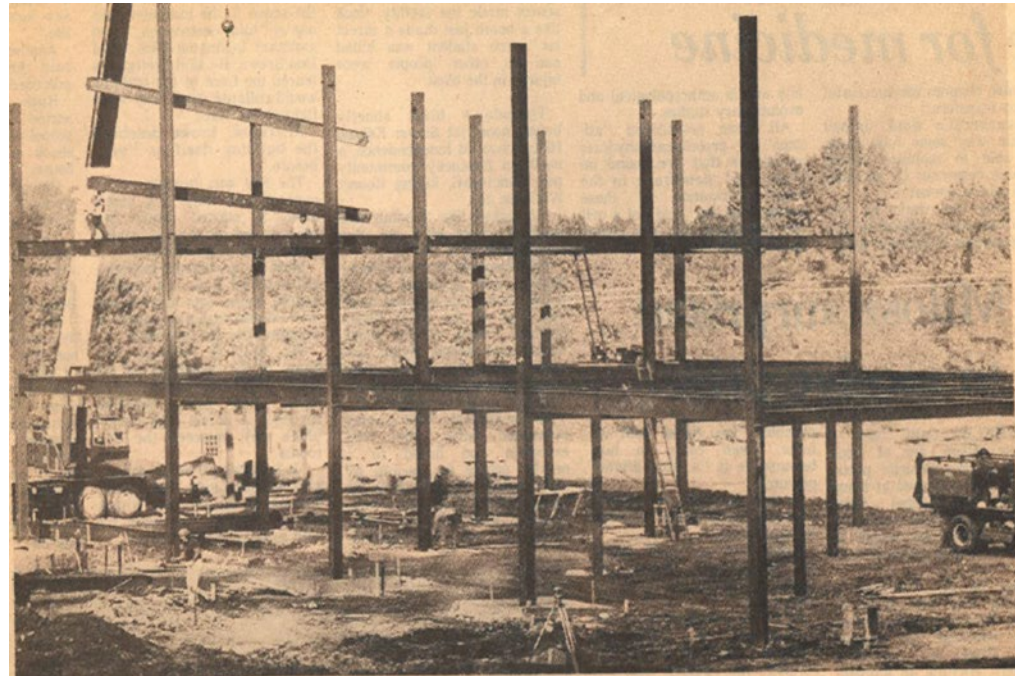
NOTE: Current ER Expansion is \$10.6 million

Funding sources for the new Central Carolina Hospital included....

- A. The Duke Endowment
- B. The federal government
- C. Lee County taxpayers via bond issue
- D. George and Mary Casey
- E. All of the above

Funding sources for the new Central Carolina Hospital included....

- A.
- B.
- C.
- D.
- **E. All of the above**



New hospital on way up 10-10-80

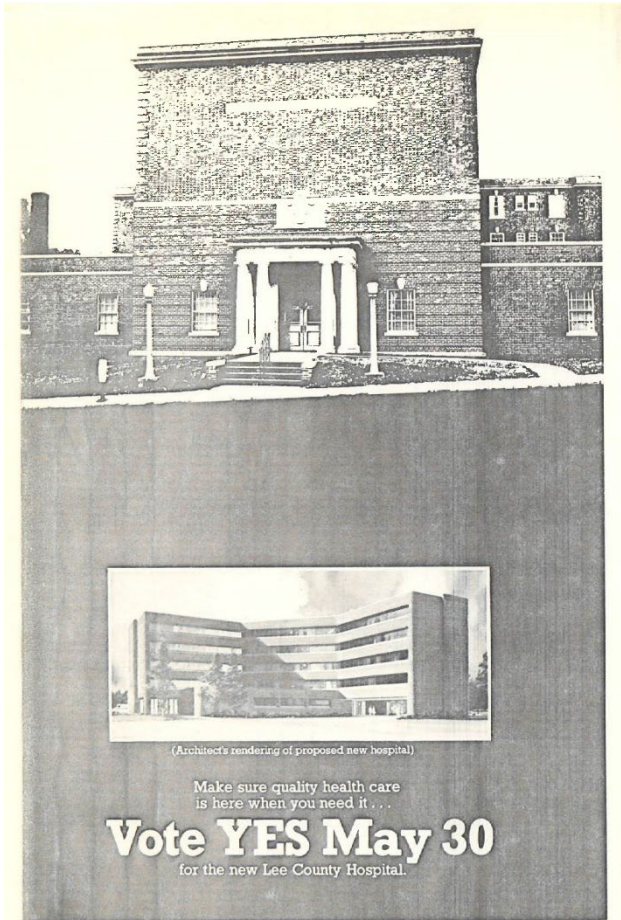
When American Medical International was making its pitch to take over Lee County Hospital, the company said it could build a replacement facility very quickly. Evidence indicates that AMI intends to do just that. Already the structural steel framework for the new 140-bed hospital has been partially erected at the building site, corner of Carthage Street and Fields Drive. Tentative date for com-

pletion is August of next year, according to Mickey McCaig, foreman for general contractor Edward J. Gerritts construction company of Miami, Fla. McCaig said the first phase of the steel framework would be up by the first week in November, weather permitting. At present he said, about 40 to 50 persons are working on the new hospital, many of whom are working for subcontractors. (Staff photo by Jimmy Haire)

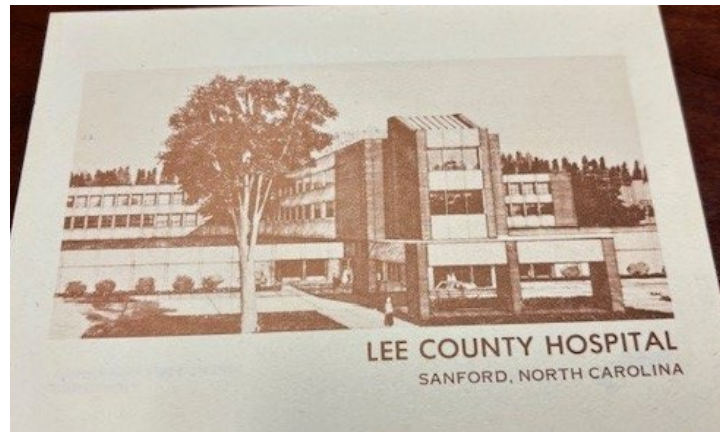
Funding sources for the new Central Carolina Hospital in 1981

- **The Duke Endowment:** \$152,500
- **Federal Government:** \$866,000
- **Lee County bond issue:** \$835,000
- **George and Mary Casey:** \$150,000-\$250,000

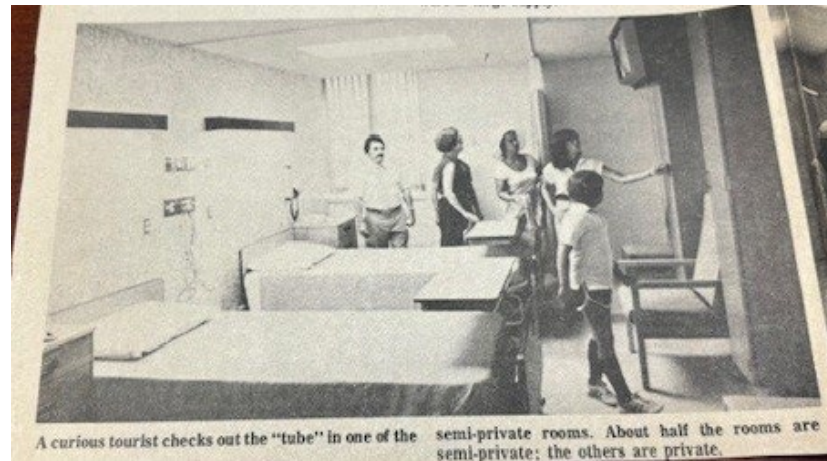
The new Central Carolina Hospital 1981



Bond Issue brochure 1980



Grand Opening Invitation 1981



The new Central Carolina Hospital 1981



Since 1980, CCH has been operated by what companies?

- A. AMI
- B. Tenet
- C. Duke LifePoint Healthcare
- D. All of the Above

Since 1980, CCH has been operated
by what companies?

- A.
- B.
- C.
- **D. All of the Above**



CCH has been operated by...

- **AMI** (American Medical Int'l) - 1980-1995
- **Tenet Healthcare Corporation** - 1995-2016
- **Duke LifePoint Healthcare** - 2016 to Present

*Lee County Commissioners changed the hospital name to "Lee County Hospital **Inc.**" in 1968.*

AMI changed the hospital's name back to Central Carolina Hospital when it took over in 1980.

CCH was a private, for-profit hospital under the ownership of which companies?

- A. AMI
- B. Tenet
- C. Duke LifePoint Healthcare
- D. All of the Above

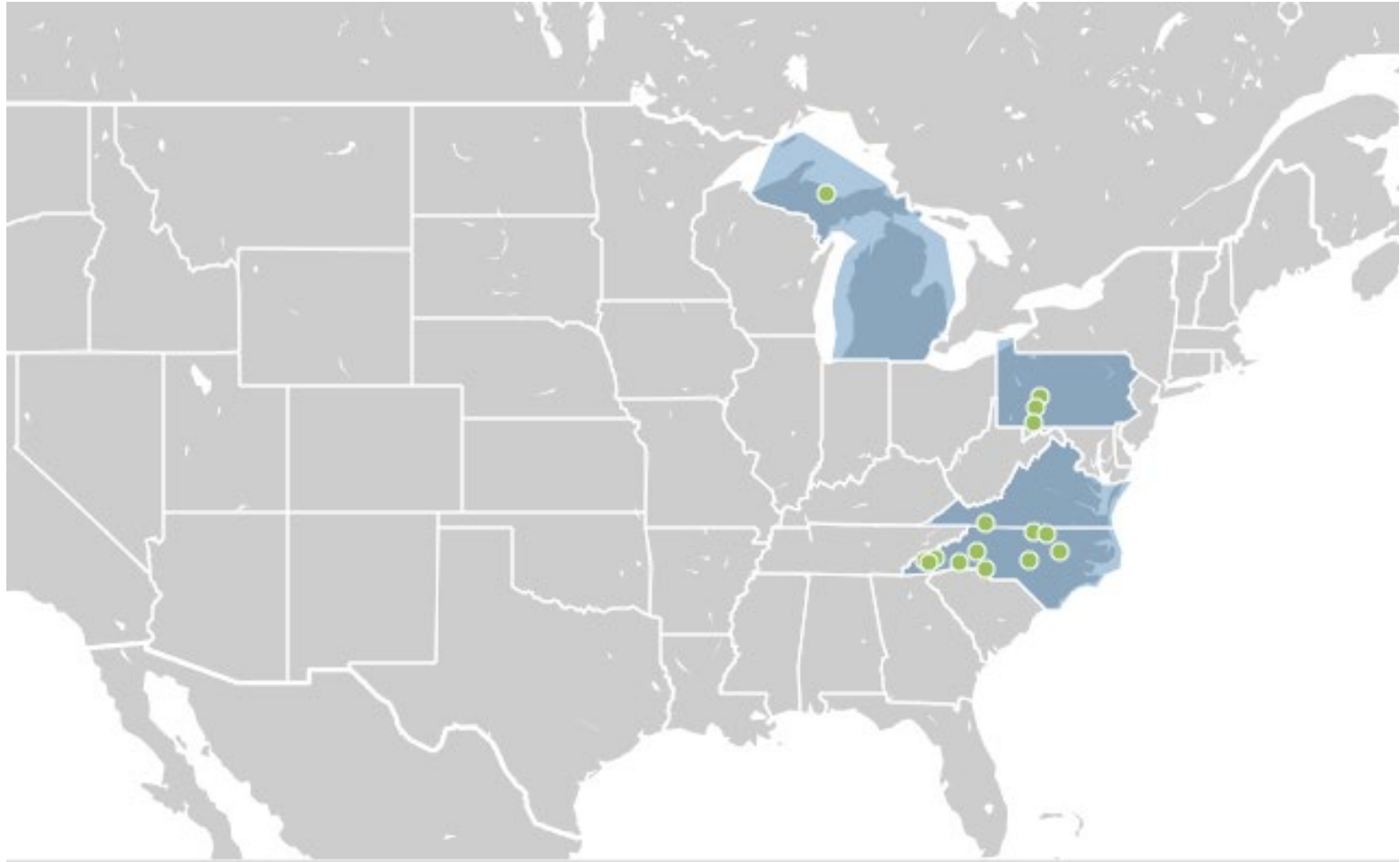
CCH was a private, for-profit hospital under the ownership of which companies?

- A.
- B.
- C.
- **D. All of the Above**

What is Duke LifePoint Healthcare?

- Joint venture created in 2011 between Duke Health and Lifepoint Health
- Network of 14 hospitals and healthcare providers in North Carolina (9), Pennsylvania (3), Virginia (1) and Michigan (1)
- Brings together Lifepoint's experience in community-based hospital management with Duke's world-renowned leadership in patient safety and clinical quality systems to benefit community hospitals

Duke LifePoint Locations



As a private, for-profit hospital, Central Carolina Hospital last year paid...

- A. No taxes
- B. \$2.6 million in taxes
- C. \$4.7 million in taxes
- D. \$7.1 million in taxes

Central Carolina Hospital last year paid...

- A.
- B.
- C.
- D. **\$7.1 million in taxes**

Central Carolina Hospital last year provided...

- A. \$13 million in uncompensated care
- B. \$23 million in uncompensated care
- C. \$33 million in uncompensated care
- D. \$38 million in uncompensated care

Central Carolina Hospital last year provided...

- A.
- B.
- C.
- D. **\$38 million in uncompensated care**

Central Carolina Hospital has...

- A. 375 employees
- B. 450 employees
- C. 500 employees
- D. 525 employees

Central Carolina Hospital has...

- A.
- B.
- C.
- D. **525 employees**

Central Carolina Hospital has...

- A. 120 providers
- B. 150 providers
- C. 180 providers
- D. 200 providers

Central Carolina Hospital has...

- A.
- B.
- C.
- D. **200 providers**

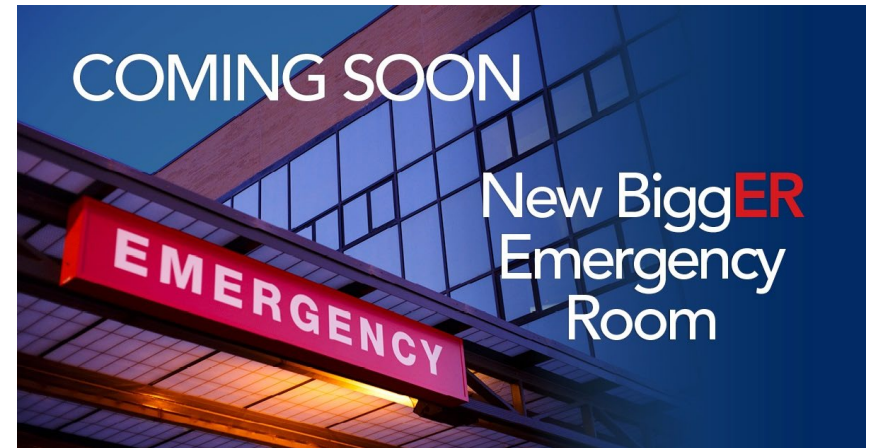
Central Carolina Hospital Today

- 137-bed community hospital
- Eleven physician practice sites with more than 81,000 visits annually
- Primary service area: Lee County



Central Carolina Hospital Today

- **Main Specialties:** cardiology, orthopedics, general surgery, obstetrics, gynecology, ophthalmology, emergency medicine, gastroenterology, hospitalists, intensivists, neurology, nephrology, hematology, urology, podiatry, pulmonary medicine and wound care



Questions?